

## Research

### \*Corresponding author

#### Anteneh Taye

PhD Candidate at Food Engineering Chair  
SCBCE-AAiT, AAU  
Instructor  
Department of Food Science  
and Technology  
Hope College of Business  
Science and Technology  
P.O.Box 55432, Addis Ababa, Ethiopia  
Tel. +251-913-134060  
E-mail: [antetaye@gmail.com](mailto:antetaye@gmail.com)

Volume 2 : Issue 2

Article Ref. #: 1000AFTNSOJ2133

### Article History

Received: June 22<sup>nd</sup>, 2016

Accepted: September 26<sup>th</sup>, 2016

Published: September 26<sup>th</sup>, 2016

### Citation

Taye A, Engidawork E, Urga K. An in vitro estimation of glycemic index of white bread and improvement of the dietary fiber. *Adv Food Technol Nutr Sci Open J*. 2016; 2(2): 83-87. doi: [10.17140/AFTNSOJ-2-133](https://doi.org/10.17140/AFTNSOJ-2-133)

### Copyright

©2016 TAYE A. This is an open access article distributed under the Creative Commons Attribution 4.0 International License (CC BY 4.0), which permits unrestricted use, distribution, and reproduction in any medium, provided the original work is properly cited.

# An *In Vitro* Estimation of Glycemic Index of White Bread and Improvement of the Dietary Fiber

Anteneh Taye<sup>1\*</sup>; Ephrem Engidawork<sup>2</sup>; Kelbessa Urga<sup>3</sup>

<sup>1</sup>Department of Food Science and Technology, Hope College of Business, Science and Technology, Addis Ababa, Ethiopia

<sup>2</sup>Associate Professor of Pharmacology, Department of Pharmacology and Clinical Pharmacy, College of Health Sciences, Addis Ababa University, Addis Ababa, Ethiopia

<sup>3</sup>Associate Professor of Health and Nutrition, Ethiopian Public Health Institute, Addis Ababa, Ethiopia

### ABSTRACT

Consumers of products preferably demand minimally processed products that do not contain chemical preservatives and maintain health benefits. These encourage the use of dietary fiber (DF) to combat some metabolic disorders like diabetes and other immunological compromises. This study indicates the potential of DF to satisfy the lowering of estimated glycemic index from improved white bread. The sources were selected from crude fiber composition of different cereals and fruits. Fruits of ripen avocado mesocarps and baobab pulps composed of total pectin composition 13%, 30% respectively and selected as good sources. Analysis of total dietary fiber (TDF), insoluble dietary fiber (IDF) and soluble dietary fiber (SDF) were carried out according to the manufacturer megazyme total dietary fiber kit protocol and methods described in Association of Official Analytical Chemists (AOAC). Improvement of DF was observed by enhancing on white breads (WB) based on the daily requirement of soluble fibers (pectin) composition, i.e. 6 g/day. Samples of avocado improved bread (AVB) and baobab improved bread (ADB) were made by mixing in proportion of wheat flour to avocado/baobab pulps (97:3); (94:6); (88:12). Analysis of proximate composition and *in vitro* estimation of hydrolysis index (HI) and glycemic index (GI) were done for products to evaluate the quality and impact on blood glucose level. Significant differences were observed for predicted GI between improved bread and controls, 82.84±0.37 (WB), 80.63±0.21 (ADB), 78.50±0.30 (AVB). As a result, the reductions in GI for the improved white breads indicate the delay in release of glucose from absorption by the cell due to the viscous nature of dietary fiber component. Thus, the improved white breads with appropriate soluble dietary fiber (pectin) content, reveals the potential for the reduction of blood glucose level and can be considered as functional foods (nutraceuticals) along with its moderate level degree of likeness or sensory acceptability. In general, the study has indicated that the soluble fibres can have a potential to reduce the post-prandial glucose by delaying absorption in cells.

**KEYWORDS:** Dietary fiber; *In vitro*; *In vivo*; Hydrolysis index; Glycemic index; Nutraceuticals.

**ABBREVIATIONS:** DF: Dietary Fiber; TDF: Total Dietary Fiber; IDF: Insoluble Dietary Fiber; SDF: Soluble Dietary Fiber; AOAC: Association of Official Analytical Chemists; WB: White Breads; AVB: Avocado Improved Bread; AUC: Areas Under Curves; HI: Hydrolysis Index; IDF: International Diabetes Federation; GI: Glycemic Index.

**INTRODUCTION**

Food industries are mainly challenged by consumer’s demand in quality, safety and minimally processed products that do not contain chemical preservatives and maintain health benefits. These encourage the use of dietary fiber (DF) as functional food (nutraceuticals).<sup>1</sup> Functional foods play a special role to satisfy hunger, provide the necessary nutrients, and prevent nutrition related diseases.

Dietary fiber compounds composed of non-digestible carbohydrate by endogenous enzymes and a mixture of plant carbohydrate polymers.<sup>2</sup> The physical properties of DF in food determine the physiologic effects and potential health benefits.<sup>3</sup> Such as, influence on glucose and fat absorption and bowel function.<sup>4</sup>

The difference in pattern of diabetes varies in countries due to economic status and forecasted to be present in 2030 according to International Diabetes Federation (IDF).<sup>5,6</sup> Hence, this paper has shown the significant advantage of improving white breads with soluble DF (pectin) through providing an important information on a) using of agricultural sources for therapeutic and to alleviate nutrient related health problems, b) aware the value of waste disposal of agricultural or fiber sources, such as bran or peel of fruits; c) increasing the advantage of using soluble dietary fiber SDF (pectin) as raw materials in food industries.<sup>7,8</sup>

**METHODS**

Potential crude fiber sources were screened from cereals and fruits. Analysis of TDF, IDF and SDF were done using methods no. of AOAC 985.29 and 993.19.<sup>9</sup>

Pectin, SDF, extracted from sources was based on the method of Sadasivam and Manickam.<sup>10</sup> Quantitative determination of pectin content was done using ultraviolet-visible (UV-V) spectrophotometer ( $\lambda=520$  nm) for the reaction of galacturonic acid with carbazole in presence of sulfuric acid.

Samples of improved products, baked bread, were prepared<sup>6</sup> at 3<sup>rd</sup> level by proportionate wheat flour to baobab (adansonia) and/or avocado pulps accordingly [ADB1/AVB1 (97:3); ADB2/AVB2 (94:6); ADB3/AVB3 (88:12); Control (100:0)]. The proximate values were analyzed for the above samples using methods for determination of content for crude fat (Soxhlet method), crude protein (Kjeldahl method), moisture, total ash, crude fibers using method no. of AOAC 4.5.01, 979.09, 925.05, 941.12 and 920.16<sup>9</sup> respectively and total carbohydrate by difference method.

Estimation of *in vitro* kinetic of starch digestion was done using the method of Goni.<sup>11</sup> The rate of starch digestion was expressed as the percentage of total starch hydrolyzed at difference of 30 minutes in time intervals. The areas under

curves (AUC) for hydrolysis of all products were calculated for the release of glucose concentration against time. The HI was calculated as the relation between the AUC for a food and the AUC for a reference food, white bread, expressed as a percentage.

Sensory evaluation was performed in 12-18 hours after baking in evaluating color, texture, taste, odor and overall acceptability of the bread samples.<sup>6</sup>

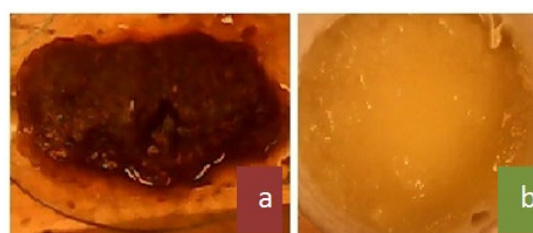
**RESULTS AND DISCUSSION**

Compositions of crude fibre were screened from cereals (teff white (TW), barely without bran white (BWB), wheat whole white (WWW), wheat whole black (WWB) barely whole white (BWW)) and fruits (avocado pulp (AVP), baobab pulp (ADP)) as a source (Table 1). However, baobab pulp (*Adansonia Digitata*) was found higher in crude fiber content than avocado and cereals, avocado was selected among others in consideration to the economic feasibility and accessibility.

Sample Type	%Moisture	%Fiber in Wet Base	%Crude Fiber in Dry Base	Reference Moisture	Reference Crude Fiber
TW	10.78±0.02	2.62±0.21 <sup>a</sup>	2.93±0.42 <sup>a</sup>	10.90	2.00
BWBW	10.27±0.29	2.72±0.40 <sup>a</sup>	3.03±0.02 <sup>a</sup>	9.10	2.20
WWW	10.95±0.06	3.08±0.74 <sup>a</sup>	3.46±0.02 <sup>a</sup>	9.50	2.30
WWB	10.91±0.03	4.85±0.02 <sup>a</sup>	5.44±0.03 <sup>a</sup>	11.30	3.00
BWW	11.27±0.17	3.97±1.47 <sup>a,b</sup>	4.47±0.69 <sup>a,b</sup>	7.70	2.00
AVP	4.83±0.05	5.16±0.69 <sup>b</sup>	5.42±0.01 <sup>b</sup>	8.12	3.10
ADP	8.73±0.22	8.53±1.47 <sup>c</sup>	9.35±0.18 <sup>c</sup>	10.4±0.1	16.2±0.09

Significance differences ( $p<0.05$ ) are indicated with superscripts a,b,c.

**Table 1:** Screening of cereals and fruits for crude fibers content in wet and dry base.



**Figure 1:** Extracted pectin from (a) Baobab pulp, (b) Avocado pulp.

The yield of extracted pectin from baobab pulp (a) and avocado pulp (b) (Figure 1) were found 20.94±2.42% and 3.01±1.41% respectively on dry base. The reported baobab pectin yield was obtained more than 10%.<sup>12</sup>

The yield (%) of dietary fibres TDF, IDF, SDF ( $p<0.05$ ) for avocado and baobab pulp (Table 2) suggested baobab has been considered as a potential source for pectin.

%Yields	AVR	ADR
TDF	13.09±0.80% <sup>a</sup>	33.29±2.58% <sup>b</sup>
IDF	5.38±0.16% <sup>a</sup>	12.95±2.17% <sup>b</sup>
SDF	7.71±0.96% <sup>a</sup>	20.34±4.75% <sup>b</sup>

Significance differences ( $p<0.05$ ) are indicated by superscripts a, b.

**Table 2:** Dietary fiber composition of raw materials, avocado and baobab.

The nutrient compositions, which indicate the food quality, was indicated by its proximate composition (Table 3). The improved bread with avocado (AVB) indicated higher energy value due its fat content however it reduced the carbohydrate composition lesser by improved bread by baobab (ADB).

Sample Code (WFR:AD)	%Moisture	Ash	Protein	Fat	Crude Fiber	Carbohydrate	Energy (KCal/gm)
ADB1	6.59±1.27 <sup>a</sup>	5.63±0.79 <sup>b</sup>	9.84±0.50 <sup>c</sup>	5.54±0.80 <sup>a</sup>	7.98±0.49 <sup>a</sup>	64.41±0.98 <sup>a</sup>	346.87±4.37
ADB2	7.48±0.37 <sup>a</sup>	6.93±0.28 <sup>b</sup>	10.09±0.67 <sup>c</sup>	6.44±1.26 <sup>a</sup>	8.37±0.89 <sup>a</sup>	60.70±0.98 <sup>b</sup>	341.10±5.98
ADB3	8.42±0.29 <sup>a</sup>	8.55±0.19 <sup>a</sup>	12.56±0.78 <sup>b</sup>	6.41±0.90 <sup>a</sup>	9.38±0.05 <sup>a</sup>	54.67±0.24 <sup>a</sup>	326.64±4.06
AVB1	4.97±0.07 <sup>a</sup>	3.23±0.82 <sup>a</sup>	3.65±0.19 <sup>a</sup>	9.41±1.15 <sup>a</sup>	5.27±0.89 <sup>a</sup>	73.46±1.56 <sup>b</sup>	393.19±5.78
AVB2	5.84±0.08 <sup>a</sup>	3.52±0.25 <sup>a</sup>	4.30±0.20 <sup>a</sup>	13.63±0.82 <sup>b</sup>	7.04±0.04 <sup>a</sup>	65.68±0.29 <sup>b</sup>	402.59±3.11
AVB3	6.03±0.54 <sup>a</sup>	3.68±0.42 <sup>a</sup>	4.30±0.22 <sup>a</sup>	16.41±1.30 <sup>c</sup>	5.85±0.70 <sup>a</sup>	63.73±1.74 <sup>a</sup>	419.76±6.51
WBD	6.26±0.32 <sup>b</sup>	2.80±0.15 <sup>a</sup>	9.71±0.65 <sup>c</sup>	4.92±0.43 <sup>a</sup>	6.10±1.51 <sup>a</sup>	70.19±0.40 <sup>a</sup>	363.94±2.69
ADR	7.41±0.90 <sup>a</sup>	8.98±0.61 <sup>b</sup>	5.39±0.45 <sup>a</sup>	1.94±0.25 <sup>a</sup>	14.30±1.26 <sup>b</sup>	61.98±1.02 <sup>a</sup>	286.92±2.71
AVR	13.19±0.33 <sup>a</sup>	3.01±0.45 <sup>a</sup>	2.50±0.28 <sup>a</sup>	18.72±0.34 <sup>b</sup>	5.95±0.51 <sup>a</sup>	56.62±0.08 <sup>a</sup>	405.03±1.50
WFR	12.68±0.22 <sup>a</sup>	2.05±0.46 <sup>a</sup>	10.47±0.65 <sup>c</sup>	2.51±0.51 <sup>a</sup>	8.70±0.71 <sup>a</sup>	63.58±0.37 <sup>a</sup>	318.81±2.89

Values are mean±SE; superscripts a,b,c indicate significantly different at (p<0.05) for triplicate determinations.

Table 3: Proximate value in dry base [g/100 g] for wheat flour, raw fruits and improved breads.

The intensity of releasing glucose concentration was calculated from the calibration curve using Beer's law.<sup>11</sup> The samples are prepared from improved white bread (product) proportionally on the basis of pectin potential at 3 levels.

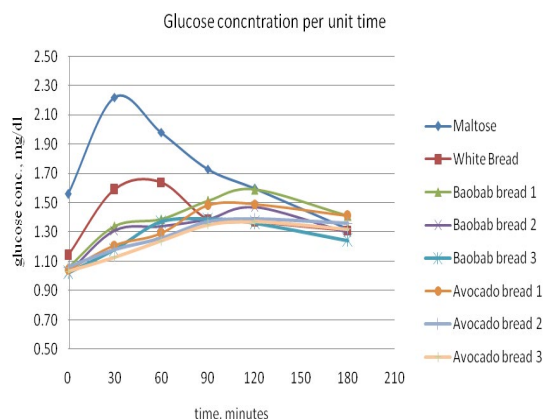


Figure 2: Kinetic response of improved products.

The kinetic response (release) of glucose concentration (Figure 2) was found in decreasing the intensity from maltose (reference control) to AVB type 3 with increasing time. As a result, the improved products indicate the delay in hydrolysis time for which accounts for water retaining capacity. The HI was calculated as the relation between the AUC for a food and the AUC for a reference food, white bread, expressed as a percentage (Table 4). HI is a good predictor of glycemic response. Thus, the predicted GI was estimated using  $GI=39:71+(0.549*HI)$ .<sup>13</sup>

These findings for estimation of *in vitro* analysis was compared with the report from Daou et al, Goni et al and Lee et al.<sup>11,14,15</sup> The physical properties (structure, particle size, porosity and density) and chemical composition have an important effect

on the soluble fractions due the water holding capacity of dietary fibres. As reported by Lecumberri et al,<sup>16</sup> soluble fibres like pectin have a high hydration capacity, holding water and swelling to form viscous solutions (Figure 3). Thus, it adsorbs and retains other substances like glucose, minerals, no polar molecules (i.e. fats, bile acids), etc.

Type	HI	GI
Maltose	100.00±0.33 <sup>a</sup>	94.61±0.33 <sup>a</sup>
White Bread	78.57±0.37 <sup>b</sup>	82.84±0.37 <sup>b</sup>
Baobab bread 1	74.54±0.21 <sup>c</sup>	80.63±0.21 <sup>c</sup>
Baobab bread 2	70.86±0.31 <sup>d</sup>	78.61±0.31 <sup>d</sup>
Baobab bread 3	68.57±0.29 <sup>e</sup>	77.36±0.29 <sup>e</sup>
Avocado bread 1	70.66±0.30 <sup>f</sup>	78.50±0.30 <sup>f</sup>
Avocado bread 2	68.42±0.29 <sup>g</sup>	77.27±0.29 <sup>g</sup>
Avocado bread 3	66.72±0.28 <sup>h</sup>	76.34±0.28 <sup>h</sup>

Mean±SE, superscript letters a to h indicates significantly different at (p<0.05)

Table 4: Hydrolysis index and predicted GI for the samples and controls.



Figure 3: White bread (WFB), avocado improved bread (AVB), baobab improved bread (ADB).

The sensory analysis for products were described by semi-trained analysts by whom the data was analyzed in SPSS-20 for different attributes. The result was indicated (Table 5) for the 3 products.

Attributes	Bread type		
	ADB	AVB	WB
Color	2.18±0.93 <sup>a</sup>	2.88±1.46 <sup>a</sup>	1.60±0.71 <sup>b</sup>
Texture	2.50±0.85 <sup>a</sup>	2.65±1.17 <sup>a</sup>	2.15±0.92 <sup>b</sup>
Flavor	3.15±1.37 <sup>a</sup>	2.40±1.11 <sup>b</sup>	2.00±0.88 <sup>c</sup>
Taste	3.10±1.30 <sup>a</sup>	2.60±1.06 <sup>b</sup>	2.25±0.84 <sup>c</sup>

Mean±SE, superscript letters a,b,c indicates significantly different at (p<0.05).

Keys: 1=like extremely, 2=like very much, 3=like moderately, 4=neither like nor dislike, 5=dislike moderately, 6=dislike very much, 7=dislike extremely.

Table 5: Overall acceptance of the sensory attributes between products.

The degree of likeness for color and texture, there is no significant difference (p>0.05) between ADB and AVB, while WB indicates significantly different (p<0.05) from ADB and AVB. Declining the magnitudes of the degree of likeness for flavor and taste, all products (ADB, AVB and WB) have shown that there were significant differences among them. This may be from the habituated nature or alteration of users from normal circumstance unenhanced (unimproved) dietary fiber and this probably required longtime adaptation. The texture for AVB is significantly different from WB while insignificantly different from ADB. Probably, this may be from the moisture content of

avocado and baobab and due to the water absorption or holding capacity of the product.

## CONCLUSION

The study has argued for a hypothesis that improved white bread has no effect on estimation of GI. For this reason, analysis for estimation of hydrolysis, GI and sensory attribute was carried out for improved white bread with dietary fibre.

- As a result, the prediction for low GI in enhanced white bread was significantly differing from white bread. Hence, the present study is concluded as: The components of dietary fibre composition of selected avocado and baobab fruits pulp were found as an advantage to be integrated in a white bread.
- The potential composition of functional fibre (pectin) component in fruits indicates its physiological metabolic benefit as a nutraceuticals model.
- The dietary fibre (functional fibre) enhanced white bread suggested an apparent delay in releasing glucose concentration during hydrolysis and effects in slowing down the carbohydrate absorption in the management of blood glucose level.
- The overall acceptability for the improved white bread was liked moderately while for white bread was liked very much, however an adaptation to typical product natures interferes.

## RECOMMENDATION

- ⇒ Metabolic effect of enhancing dietary fiber in human subject has not been studied and an *in vivo* glycemic index or blood glucose level shall be conducted for future study.
- ⇒ Purification and characterization of the soluble dietary component, physico-chemical characteristics and other most related parameters like available or resistance starch were not included in the study. Hence, the measurements of such parameters are suggested.
- ⇒ Consumers shall use dietary fiber enhanced foods for the management of blood glucose.
- ⇒ The findings of this study can be used as base line information or an indicator to food processors and related users.

## ACKNOWLEDGMENT

AAU-Center for Food Science and Nutrition, Megazyme Co. Ltd (Dr. Barry) - Ireland, Eng. Wudeneh, Dr. Endale, Dr. Yehune, Dr. Kaleab/Dr. Ashagrie/Dr. Dawd.

## CONFLICTS OF INTEREST

The authors declare that they have no conflicts of interest.

## REFERENCES

1. Redgwell RJ, Fischer M. Dietary fiber as a versatile food component: An industrial perspective. *J Mol Nutr Food Res*. 2005;

49(6): 421-535. doi: [10.1002/mnfr.200500028](https://doi.org/10.1002/mnfr.200500028)

2. Yangilar F. The application of dietary fibre in food industry: Structural features, effects on health and definition, obtaining and analysis of dietary fibre: A review. *J Food Nutr Res*. 2013; 1(3): 13-23. doi: [10.12691/jfnr-1-3-1](https://doi.org/10.12691/jfnr-1-3-1)

3. Martino F, Puddu PE, Pannarale G, Barillà F. Dietary fibers and nutraceuticals for primary cardiovascular prevention in children and adolescents: A critical review. *J Food Nutr*. 2013; 4: 39-47. doi: [10.4236/jns.2013.47A006](https://doi.org/10.4236/jns.2013.47A006)

4. Lattimer JM, Haub MD. Effects of dietary fiber and its components on metabolic health. *Nutrients*. 2010; 2(12): 1266-1289. doi: [10.3390/nu2121266](https://doi.org/10.3390/nu2121266)

5. International Diabetes Federation, IDF. *Number of People in Diabetes (20-79) Years*. 6<sup>th</sup> ed. Brussels, Belgium: IDF-Diabetes Atlas; 2013.

6. Sengev AI, Abu JO, Gernah DI. Effect of moringa oleifera leaf powder supplementation on some quality characteristics of wheat bread. *J Food Nutr Sci*. 2013; 4: 270-275. Web site. <http://search.proquest.com/openview/7f8259b5b5ff9f2c1e9728a173863e641/1?pq-origsite=gscholar>. Accessed June 21, 2016.

7. Shaw JRA, Sicree R, Zimmet P. Global estimates of the prevalence of diabetes for 2010 and 2030. *Diabetes Res Clin Pract*. 2010; 87: 4-14. doi: [10.1016/j.diabres.2009.10.007](https://doi.org/10.1016/j.diabres.2009.10.007)

8. Sundar Raj AA, Rubila S, Jayabalan R, Ranganathan TV. A review on pectin: Chemistry due to general properties of pectin and its pharmaceutical uses. *Sci Rep*. 2012; 1: 550.

9. Association of Analytical Communities (AOAC). *Official Methods of Analysis*. 16<sup>th</sup> ed. Washington, DC, USA: Association of Official Analytical Chemists; 2000.

10. Sadasivam S, Manickam A. *Biochemical Methods*. 2<sup>nd</sup> ed. New Delhi, India: New age International Publisher; 1996.

11. Goni I, Garcia-Alonso A, Saura-Calixto F. A starch hydrolysis procedure to estimate glycemic index. *J Nutr Res*. 1997; 17(3): 427-437. doi: [10.1016/S0271-5317\(97\)00010-9](https://doi.org/10.1016/S0271-5317(97)00010-9)

12. Ismail NS, Ramali N, Hani NM, Meon Z. Extraction and characterization of pectin from dragon fruit (*Hylocereus polyrhizus*) using various extraction conditions. *Sains Malaysiana*. 2012; 41 (1): 41-45. Web site. [http://www.ukm.my/jsm/pdf\\_files/SM-PDF-41-1-2012/05%20Norazelina.pdf](http://www.ukm.my/jsm/pdf_files/SM-PDF-41-1-2012/05%20Norazelina.pdf). Accessed June 21, 2016.

13. Saravanabavan SN, Shivanna MM, Bhattacharya S. Effect of popping on sorghum starch digestibility and predicted glycemic index. *J Food Sci Techno*. 2013; 50(2): 387-392. doi: [10.1007/s13197-011-0336-x](https://doi.org/10.1007/s13197-011-0336-x)

14. Daou C, Zhang H. Physico-chemical properties and antioxidant activities of dietary fiber. *J Food Sci Technol.* 2011; 3(5): 339-347.

15. Lee JH, Cho A-R, Yeon Hong J, Park D-J, Lim S-T. Physical properties of wheat flour composites dry-coated with microparticulated soybean hulls and rice flour and their use for low-fat doughnut preparation. *J Cereal Sci.* 2012; 56(3): 636-643. doi: [10.1016/j.jcs.2012.08.011](https://doi.org/10.1016/j.jcs.2012.08.011)

16. Lecumberri E, Mateos R, Izquie M, Goya L, Bravo L. Dietary fibre composition, antioxidant capacity and physico-chemical properties of a fibre-rich product from cocoa. *Food Chem.* 2007; 104(3): 948-954. doi: [10.1016/j.foodchem.2006.12.054](https://doi.org/10.1016/j.foodchem.2006.12.054)