

Research

***Corresponding author**
Felice Strollo, MD, Prof.

Professor
Department of Pharmacology and
Biomolecular Sciences
University of Milan
Milan, Italy
Tel. +39.06.3219639
E-mail: felix.strollo@gmail.com

Volume 2 : Issue 2
Article Ref. #: 1000DROJ2127

Article History

Received: August 12th, 2016

Accepted: August 26th, 2016

Published: August 29th, 2016

Citation

Gentile S, Ceriello A, Strollo F on behalf of the AMD START DIAB Study Group. A multicenter Italian survey on diabetes care units reveals a somewhat slow attitude in treatment guideline implementation: Are we dealing with therapeutic inertia? *Diabetes Res Open J.* 2016; 2(2): 33-44. doi: [10.17140/DROJ-2-127](https://doi.org/10.17140/DROJ-2-127)

Copyright

©2016 Strollo F. This is an open access article distributed under the Creative Commons Attribution 4.0 International License (CC BY 4.0), which permits unrestricted use, distribution, and reproduction in any medium, provided the original work is properly cited.

A Multicenter Italian Survey on Diabetes Care Units Reveals a Somewhat Slow Attitude in Treatment Guideline Implementation: Are We Dealing With Therapeutic Inertia?

Sandro Gentile, MD, Prof.¹; Antonio Ceriello, MD, Prof.²; Felice Strollo, MD, Prof.³ on behalf of the AMD[#] START DIAB Study Group

[#]AMD is the acronym of the Association of Clinical Diabetologists (Associazione Medici Diabetologi)

¹Department of Clinical and Experimental Medicine, 2nd University of Naples, Naples, Italy

²IRCCS MultiMedica, Milan, Italy

³Department of Pharmacology and Biomolecular Sciences, University of Milan, Milan, Italy

START DIAB Study Group Members

Principal Investigator: Sandro Gentile

Contributing investigators: Carlo Giorda, Gennaro Gadaleta Caldarola, Alberto Serra, Claudio Ventura, Francesco Saverio Floridi, Riccardo Candido, Franco Gregorio, Rosa Campione, Gianclaudio Allegra, Gaspare Cordaro, Giovanni Galluzzo, Gianfranco Cuzari, Carmelo de Francesco, Saverio Fatone, Pantaleo Daniele, Salvatore Marco Rizzello, Gaudenzio Stagno, Gianraimondo Morico, Miryam Ciotola, Antonio Cimino, Paolo Desenzani, Giuseppina Zaltieri, Brunella Stara, Cesare Valsecchi, Antonio Nieddu, Fabrizio Querci, Giuseppe Marelli, Vito Antonio Ladiana, Mario Manunta, Vincenzo Armentano, Maria Antonella Ferraro, Celestino Giovannini, Marco Giordano, Maria Luisa Spina, Ferruccio D'Incau, Francesco Golia, Emilia Martedi, Cristina Romano, Angelo Corda, Sandro Gentile, Giancarlo Tonolo, Fabio Celletti, Stefania Casaldi, Raffaele Scalpone, Cesare Vincenti, Elisa Nada and Ivano G. Franzetti

ABSTRACT

Aim: Current guidelines suggest pursuing optimal metabolic management ever since the onset of type 2 diabetes mellitus (T2DM). Nevertheless, over 50% Italian patients fail to meet expected metabolic targets. The aim of our observational, multicenter study was to check whether this might at least partially depend on therapeutic inertia by verifying how diabetologists modified drug regimens of patients referring to them for the first time.

Material and Methods: Two-thousand one hundred and eighty-eight people with T2DM aged ≥ 18 years and displaying a glycated hemoglobin (HbA1c) $>7\%$ (>53 mmol/mol) were analyzed at the time of their first visit at the Diabetes Care Unit (DCU). They reported no history of cardiovascular disease, were on oral hypoglycemic agents (OHA) and had clinical records available for at least the last 3 months.

Results: The most relevant findings were the following: 70.3% patients underwent treatment changes after the first visit while only 0.4% had their previous drugs withdrawn. 29.7% people, however, were kept on the same regimens despite high HbA1c values and specialists reduced sulfonylurea (SU) prescriptions by only 4.3% and started insulin only in 3.8% patients, despite people with HbA1C $>8\%$ were as many as 58%.

Conclusion: Even diabetologists were insufficiently fast and aggressive at intensifying glucose lowering treatment and in fact therapeutic inertia often prevented them from following best practice recommendations since the first visit. Specific actions have to be devised and readily taken against it to homogeneously improve diabetes outcomes by preventing unpredictably differentiated approaches from patient to patient. Better tools and greater resources allowing safer intensive glucose lowering strategies may also help specialists implement best practices.

KEYWORDS: Clinical inertia; Oral hypoglycemic agents; Type 2 diabetes.

ABBREVIATIONS: T2DM: Type 2 Diabetes Mellitus; HbA1c: Glycated hemoglobin; OHA: Oral Hypoglycemic Agents; RCT: Randomized Clinical Trials; ADA: American Diabetes Association; EASD: European Association for the Study of Diabetes; DCU: Diabetes Care Units; ANOVA: Analysis of variance; eCRF: electronic Case Report Form.

INTRODUCTION

Strategies and goals of diabetes mellitus treatment have changed fast since 2005. Randomized clinical trials (RCT) including the Diabetes Control and Complications Trial-Epidemiology of Diabetes Interventions and Complications (DCCT-EDIC),¹ United Kingdom Prospective Diabetes Study (UKPDS 80),² and STENO 2³ consistently reported a better prognosis in patients starting intensive treatment regimens early after diagnosis compared to those achieving acceptable HbA1c levels later on. Such findings were supported by basic science, suggesting irreversible beta-cell damages as a consequence of oxidative stress due to prolonged exposure to high glucose concentrations.⁴ A strong clinical message was then sent out to pursue optimal metabolic management ever since the onset of the disease.⁵

In spite of this, attaining and maintaining an adequate metabolic control are still a challenge. In fact, a recent report on diabetes care quality indicators in Italy showed that over 50% people with T2DM fail to meet expected metabolic targets, and approximately 30% of newly diagnosed patients have a HbA1c >8.0% (>64 mmol/mol).⁶ Among the many factors suggested to explain failure to achieve recommended goals, clinical inertia is increasingly recognized as the leading one.⁷ Patients on metformin or sulfonylurea (SU) monotherapy starting treatment intensification only after overcoming 8.5% (69 mmol/mol) HbA1c levels are expected to take 2 to 3 years to get good metabolic control.⁸ On the other hand, opinions concerning the most appropriate therapeutic algorithm to be adopted in these cases are controversial. The American Diabetes Association and the European Association for the Study of Diabetes (ADA/EASD) consensus statement on medical management of hyperglycemia in T2DM⁹ recommends starting treatment with metformin associated to lifestyle modification, and eventually adding either basal insulin, or SUs, or pioglitazone, or incretins (Incs) when patients fail to meet expected goals. Nevertheless, such approach has been criticized as potentially hindering treatment individualization and therefore preventing diabetes complication rate and cardiovascular risk reduction.¹⁰ So, due to the absence of any widely accepted standards, the choice of individual treatment intensification strategies in people with newly diagnosed T2DM falls on each physician.¹¹

Since the 80's, Italy has organized diabetes care according to a protocol based on 3 stages of increasing complexity: (i) general practitioners (GPs), devoted to primary care, represent the first level, (ii) a network of 650 diabetes care units

(DCU), involving multi-professional specialized teams dedicated to more complicated patients, contribute to the second level, and (iii) hospital wards, serving patients with severe metabolic conditions or with advanced organ complications, represent the third level. GPs take responsibility for the diagnosis and suggest patients to refer to the closest DCU according to a validated protocol shared with the most representative scientific societies in the field.¹² Unfortunately, this protocol is not fully implemented and in real-life conditions most GPs still send their patients to DCUs only in the presence of persistent hyperglycemic levels or of fast-progressing chronic complications.^{13,14}

This causes diversity, a sort of dichotomy between uncomplicated GP-handled patients, who are treated with a OHA, and older, severely complicated, insulin-treated patients, who rely on a DCU. Two clusters of patients with different levels of clinical complexity are generated then and this is not cost-effective in the long run because the former is expected to develop severe complications as metabolic control progressively deteriorates.¹⁴ A further challenge to health assistance is age, because T2DM is a severe health issue *per se* in people over 60 years of age¹⁵ who, despite large inter-individual differences in physical and mental performance, are characterized by increased comorbidity rates and less active lifestyles.

The reasons why too many patients are still far from reaching acceptable glucose levels all over Europe^{16,17} may include poor care system organization, as reported above, but also patients poor adherence to treatment.¹⁸ In fact, according to a meta-analysis of 127 studies which reported a significantly higher adherence rate for people handled by communication-trained physicians, patients adherence is also affected by clinicians communication skills.¹⁹

Anyway a large body of evidence is available on another relevant clinical problem: therapeutic inertia. The latter is usually defined as providers failure to prescribe new drugs or to increase the dosage of existing medications when an abnormal clinical parameter is recorded.²⁰ Italian GPs generally prefer to ask for support from diabetologists before starting insulin treatment^{11,14} and, even those willing to prescribe innovative drugs are not allowed to do so without any official specialist's approval. In fact they cannot autonomously use a glucagon-like peptide-1 receptor agonists/analog (GLP1-RA) or dipeptidyl peptidase-4 inhibitor (DDP-4i) but, contradictorily enough, they are expected not to overcrowd DCUs with mild disease cases. That's why, when insulin sensitizer treatment fails, they almost invariably add available secretagogues. As a consequence of that, recommended best practices meant at improving outcomes are often ignored and this constitutes a case of clinical inertia in terms of management and quality aspects.^{7,13} On such premises it is difficult to build-up a positive metabolic memory^{4,11,21} as in real life adequate glucose levels are still far from being reached, and poorly controlled T2DM patients are much more than expected.^{5,14,22,23}

Based on the above mentioned considerations, the aim

of this study was to verify how diabetes specialists started/modified drug regimens of their freshly referred patients to reach individualized HbA1c targets in case of HbA1c levels >7% (>53 mmol/mol), a cut-off chosen to define good metabolic control according to Italian Standards of Care, which in fact fully incorporate the latest ADA-EASD positions statement.²¹

MATERIALS AND METHODS

This was an observational, multicenter study coordinated by AMD Research Foundation and involved 48 AMD Research Network DCUs evenly distributed throughout Italy and carefully selected according to the efficiency indicators listed in the AMD Foundation Quality Manual.²⁴ Its design was approved by a dedicated Scientific Committee in November 2013. From March to June 2014 all DCUs got the protocol approved by their ethics committees and explored their data bases to randomly identify patients fulfilling inclusion criteria. The enrollment phase lasted three months and ended in December 2014. The Standards of Medical Care in Diabetes 2016²⁵ and the International Classification of Diseases, Clinical Modification (ICD-9-CM, V82.9 2014)²⁶ were used to define diabetes diagnostic criteria/procedures, as well as, comorbidities and/or disease complications.

LDL-C was estimated by the Friedewald equation. Microalbuminuria (MA) was defined as a urinary albumin excretion rate >20 µg/min or albumin-creatinine ratio >2.5 (men) or >3.5 (women) mg/mmol. GFR was calculated with the CDK-EPI creatinine equation 2009. All local laboratories of participating centers agreed to a strict systematic quality control supervision according to the national accreditation program and to the 2015 ACCREDITIA UNI EN ISO 15189:2013 regulations.

Enrollment Criteria

People with T2DM reporting no history of cardiovascular events were considered for the study. Only those consecutively referring to a DCU during the first week of each selected month were enrolled provided they complied with the following features: age ≥18 years, HbA1c >7% (>53 mmol/mol), previous or current treatment based on lifestyle and/or OHA, availability of clinical records for at least the last 3 months. Enrollment criteria also included mild complications/comorbidities, like background retinopathy, early nephropathy (non-progressive microalbuminuria) or neuropathy (DNI<4),²⁷ cataract, mild carotid artery disease (i.e. <50% occlusion), mild or treated peripheral artery disease (i.e. haemodynamically irrelevant either *per se* or because of successful surgery, respectively), excised non-metastatic malignancies, treated hypertension. This explains why the HbA1c target was kept at 7% (53 mmol/mol) even in aged people, according to the algorithm by Ceriello et al.²⁸ In fact, patients on insulin or with gestational or brittle diabetes or with severe or fast progressing complications, any diseases markedly reducing patient's life expectancy and any clinical, mental or logistic conditions severely hampering appropriate disease management were excluded from the study.

Lifestyle was classified as poor or good according to current standards of care for diabetes mellitus.^{25,28}

Diabetologists recorded all clinical and laboratory findings electronically. All hypoglycemic agents available at the time of the study were considered for treatment immediately after referral, including metformin, SUs, repaglinide, pioglitazone, acarbose, DPP-4 is (sitagliptin, vildagliptin, saxagliptin), GLPI-RAs (Exenatide, Liraglutide), as well as, basal and/or bolus insulin (indicated as overall dose/day).

Statistical Evaluation

Single records were verified for consistency to clean the database before statistical evaluation (SPSS/plus software [Norris Inc. Ill, USA]): specific queries were sent out to the originators and, in case of unsatisfactory replies, were considered as "missing", thus allowing only 2188 patients to be accepted for subsequent analysis out of the 2227 originally enrolled (98.3%). The least accepted significance level was set at $p<0.05$.

For continuous variables descriptive analysis was used yielding means, standard deviations, least and top values, medians and quartiles while qualitative/categorical parameters generated frequency tables (n, %) where percentages were calculated and missing data were excluded in the χ^2 test with Yates correction. Cluster analysis was also utilized as appropriate. One-way analysis of variance (ANOVA) and multivariate logistic regression analysis were used as deemed appropriate to highlight any unbalanced features possibly occurring within the population under study.

RESULTS

General patient characteristics presented in Table 1 can be synthesized as follows: M/F ratio was 1.17, mean age was 63.9±9.8 years, (range 29-79), and mean BMI was 29.9±4.9 kg/m² (range 16.0-63.2) with 15% normal weight, 42% overweight and 43% obese subjects. The known duration of diabetes was ≤1 year in 7.7% patients, >1 to ≤2 years in 25%, >2 to ≤5 years in 33%, and >5 in 34.3% patients. Mild diabetes complications were found in 28.8% subjects (6.3% subjects had more than a single complication), anamnestic or on-treatment malignancies in 3.3%, hypertension in 86.3%, and dyslipidemia in 67.5% cases; 37.5% patients had high triglycerides (>150 mg/dl), 36.1% high total cholesterol (>190 mg/dl, our upper reference limit), 52.8% had high LDL-cholesterol (>100 mg/dl) and 38.8% had low HDL-cholesterol (<40 mg/dl in men or <50 mg/dl in women). All other blood parameters were normal, including creatinine.

Figure 1 depicts HbA1c distribution among patients classified according to the time elapsed between diagnosis and DCU-referral: a progressive increase in HbA1c values was observed with time. In greater detail, as shown in Figure 2, the number of patients progressively increased along with HbA1c

Variable	Subjects n. (%)
Casuistry	
Male	1182 (54)
Female	1006 (46)
Age (years) M±SD (Range)	63.9±9.8 (29-78)
BMI (kg/m ²) M±SD (Range)	29.9±4.9 (16.0-63.2)
normal weight	328 (15.0)
underweight	0 (0)
overweight	919 (42.0)
obese	941 (43.0)
Age <50 (years)	153 (7)
>50 ≤65 (years)	1356 (62)
>65 (years)	679 (31)
Diabetes duration (years)	
≤1	164 (7.7)
>1≤2	547 (25.0)
>2≤5	722 (33.0)
>5	755 (34.5)
Associated diseases/Complications	
Diabetes complications (overall)*	640 (28.8)
Background retinopathy	295 (13.5)
Earlynephropathy	263 (12.0)
Earlyneuropathy	219 (10.0)
Othercomplications (CCT, CAD, PAD)	108 (4.9)
Excised non metastatic malignancies	68 (3.1)
Arterialhypertension(%)	(86.3)
Systolic Blood Pressure (mm Hg, M±SD)	136±15.7
Diastolic Blood Pressure(mm Hg, M±SD)	79±8.6
Biochemical parameters (M±SD)	
HbA1c (%)	8.1±0.9
Total Cholesterol(mg/dl)	185.2±34.5
HDL Cholesterol(mg/dl)	48.2±11.4
LDL Cholesterol(mg/dl)	107.0±27.5
Triglycerides(mg/dl)	150.8±70.6
Creatinine (mg/dl)	0.9±0.3

Data are expressed as mean±SD or as n. and percent rate in case of categorical variables. One hundred and thirty seven subjects (6.3%) had more than one complication. CCT= cataract, CAD= mild carotid artery disease, PAD= mild or treated peripheral artery disease.

Table 1: Descriptive features of the population at baseline (2188 type 2 diabetic subjects).

levels and finally peaked (n=1269 (57%)) at values greater than 8% (64 mmol/mol).

Among potentially interfering factors, lifestyle might affect chosen treatment strategies especially in terms of insulin sensitizing medications: this in fact was not the case as, when we explored this possibility, we found people were equally treated in terms of insulin sensitizers independent of their lifestyle and a slightly higher, still statistically insignificant, prevalence in GLP1-RAs with respect to SUs or oral Incs was found in obese people, as expected. Other potentially interfering factors including primary healthcare data, and socio-economic data might

have been an issue with respect to therapeutic choices in case of private patients living in different national contexts within Europe and endowed with varying levels of external support and different abilities to pay out-of-pocket, but they in fact could not have any impact on our results as participating subjects were all under the responsibility of the Italian national health system and were therefore homogeneously provided with visits and treatments at no charge thanks to a direct disease-related reimbursement mechanism. This leveled out all patients as for diabetologists therapeutic choices at their first referral to any DCU.

Table 2 shows that 2% subjects were taking no OHAs,

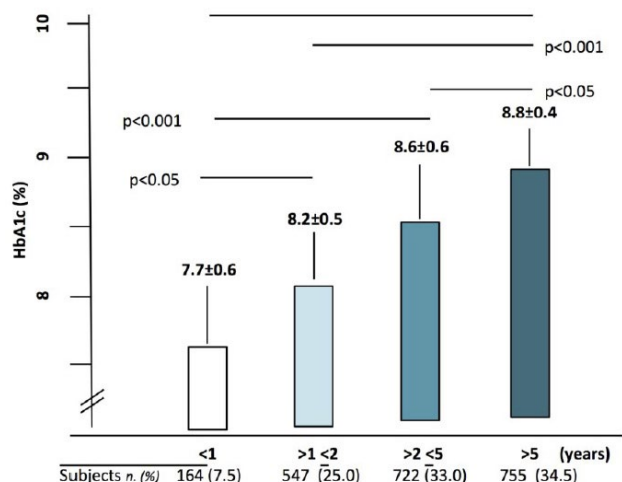


Figure 1: Patient distribution according to % HbA1c values and lag time from diagnosis to referral. All differences were statistically significant.

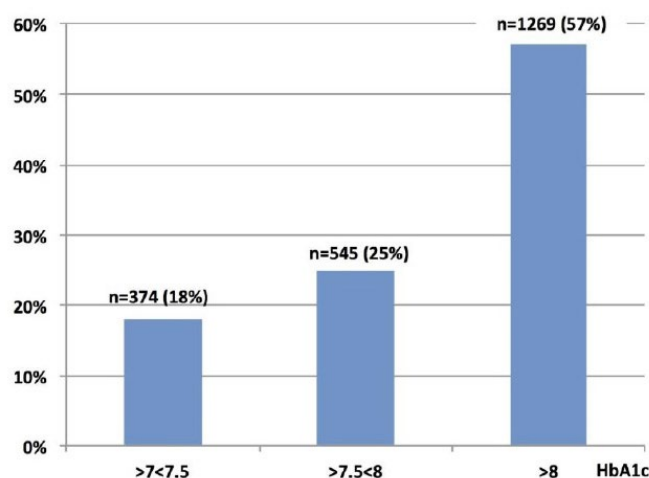


Figure 2: Distribution of patients according to three arbitrarily chosen % HbA1c categories.

41.2% were on monotherapy and 56.8% were on polytherapy. As seen in Figure 3 and Table 3 metformin was used in 1886 patients (86.2%, 725 of whom on monotherapy and 1161 on polytherapy) and Figure 4 shows that SUs were used in 963 patients (44%, 102 of whom on monotherapy and 861 on polytherapy) and IncS were prescribed to 329 patients (15%, 6 of whom on monotherapy and 323 on polytherapy). Out of the 1242 subjects on polytherapy, 55% (n=686) were taking 2 drugs and 45% (n=556) ≥3 drugs; the most frequent association was metformin+SUs and was observed in 58% subjects on 2 drugs and in 61% subjects on three drugs. We feel it worth to underline that the use of metformin or SUs was also maintained after referral in patients with an HbA1c>8% (64 mmol/mol) and more than 5 year disease duration. Other OHAs were used, mostly as polytherapy, in a minority of cases.

Among IncS, DPP-4is were utilized more than GLP1-RAs and among the former, saxagliptin and vildagliptin were the most widely chosen (39.9% and 22.2% cases, respectively, see

Figure 5). Both DPP-4is and GLP1-RAs were mainly prescribed in combination with other OHAs. The fact that 329 patients (15%) were already on IncS when referring to a DCU shows that they had been visited by a specialist within the last 6 months at least, as in Italy Inc prescriptions are competence of diabetologists only, who may repeat them at 6 month intervals when needed.

However, people with freshly diagnosed T2DM (n=164, Table 1 and Figure 1) had received their first OHA prescription by a diabetologist: 161 were on metformin, the rest on a combination of metformin and IncS.

In Table 4, the results of multivariate logistic regression analysis (backward models) are summarized, showing the relationship between some diabetes features and time of referral to the DCU, where early referral patients (≤1 year disease duration) were taken as the reference category for the others. It clearly shows that the time elapsed between diagnosis and the first refer-

Patients under study: n=2188							
Referral time (y)	≤1	>1 ≤2	>2≤5	>5	Total	Monotherapy	Polytherapy
No therapy (n, [%])	2	28	6	8	44 [2.0]	-	-
Monotherapy(n, [%])						902 [41.2]	
Polytherapy(n, [%])							1242 [56.8] ^a
Drug that may be prescribed by both GPs and Diabetologists							
Metformin (n)	162	385	685	654	1886 [86.2]	725	1134
Sulphonylureas(n)	0	301	456	206	963 [44.0]	102	861
Pioglitazone(n)	0	16	96	151	263 [12.0]	12	251
Repaglinide(n)	0	121	76	44	241 [11.0]	53	188
Acarbose(n)	0	14	36	16	66 [3.0]	4	62
Drug that may be prescribed only by Diabetologists							
Incretins(n)	16	90	135	88	329 [15.0]	6	323

^aamong the 1242 subjects on polytherapy, 55% (n=686) took 2 drugs, 45% (n=556) 3 or more drugs; the most frequent association was metformin+sulphonylureas, observed in 58% subjects on 2 drugs and in 61% subjects on 3 drugs, respectively.

Table 2: Treatment regimens at referral (drug classes) according to the lag time from diagnosis to referral. Data are expressed as n. and [%].

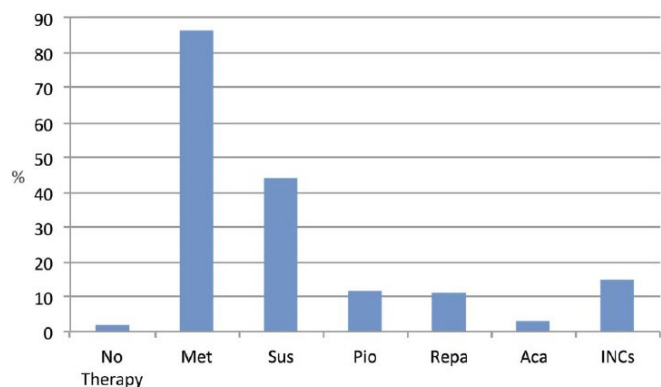
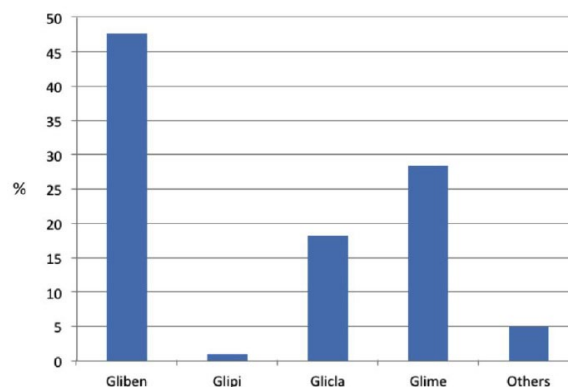


Figure 3: Utilization rate of different drug classes at referral (on both mono- and polytherapy).



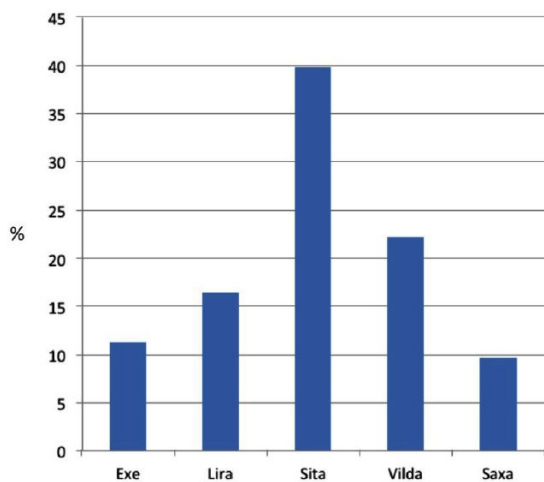
Gliben= Glibenclamide; Glipi= Glipizide; Glicla= Gliclazide; Glime= Glimepiride.

Figure 4: Relative utilization rate of different Sulphonylureas at referral (on both mono- and polytherapy).

		Total (n. 2188)		Monotherapy (n. 902)		Polytherapy (n. 1242)	
		n.	%	n.	%	n.	%
Sulphonylureas		963	44.0*	102	10.6^	861	89.4^
	Glibenclamide	459	47.6^	20	19.6°	439	51.0§
	Glipizide	9	0.9^	2	1.9°	7	0.8§
	Gliclazide	175	18.2^	39	38.2°	136	15.8§
	Glimepiride	273	28.4^	41	40.3°	232	26.9§
	Other	47	4.9^	0	0	47	5.6§
Incretins		329	15.0*	6	1.8^	323	98.2^
	Exenatide	37	11.3^	0	0	37	11.5§
	Liraglutide	54	16.4^	0	0	54	16.7§
	Sitagliptin	133	40.4^	1	16.7°	132	40.8§
	Vildagliptin	73	22.2^	5	83.3°	68	21.1§
	Saxagliptin	32	9.7^	0	0	32	9.9§

*with respect to all 2188 patients; ^within each drug class; °within each drug class on monotherapy; §within each drug class on polytherapy

Table 3: More details of treatment regimens at referral, with respect to sulphonylureas and incretins, as well as, to monotherapy and polytherapy.



EXE= Exenatide; Lira= Liraglutide; Sita= Sitagliptin; Vilda= Vildagliptin; Saxa= Saxagliptin

Figure 5: Relative utilization rate of different Incretins at referral (on both mono- and polytherapy).

Lag time of referral to a DCU (years)	>1≤2	>2≤5	>5
Subjects (n.)	547	722	755
	OR (CI 95%)	OR (CI 95%)	OR (CI 95%)
Age (year)	0.79 (0.65-0.90)	0.89 (0.87-0.91)	2.67 (2.65-2.69)
Age atdiagnosis (year)	0.61 (0.58-0.69)	0.52 (0.48-0.69)	0.60 (0.58-0.71)
DiabetesDuration (year)	0.87 (0.78-1.03)	1.68 (1.03-2.00)	2.67 (2.06-2.97)
BMI (Kg/m ²)	0.88 (0.79-0.92)	0.90 (0.84-0.96)	0.94 (0.91-0.98)
HbA1C (%)	2.19 (1.95-2.99)	2.67 (2.65-2.69)	4.36 (4.05-5.19)
Monotherapy (n.)	0.95 (0.94-0.96)	0.89 (0.79-0.95)	3.65 (3.35-4.09)
Polytherapy 2 Drugs (n.)	0.92 (0.90-0.93)	1.88 (1.56-1.99)	4.57 (3.93-4.89)
Polytherapy>2 Drugs (n.)	2.67 (2.65-2.69)	3.45 (2.98-3.78)	5.38 (4.89-5.99)

Patients with an early referral were the reference category for all the others. OR= Odds ratio, CI 95%= 95% confidence intervals; BMI= Body mass index, HbA1c= glycated hemoglobin.

Table 4: Results of multivariate logistic regression analysis (backward models) showing the relationship between some traits of diabetes and lag time of referral to a DCU.

ral to the DCU had a significant impact upon results.

We tried to look for some gender differences as these might be supposed to occur on the basis of the literature. Women in fact have been reported to be granted a poorer quality of diabetes care than men, with patient and physician attitudes eventually playing an important role in process measures and outcomes²⁹ regardless of age. We therefore tried to cross-tabulate our results according to a 2×3 (gender×age) classes (male, female and <50, 50-60 and >60 years). We immediately realized that the study was not powered enough to provide any statistically significant comparison as the vast majority of subjects were within the 50-60 age range but, independently of that, women quality of care appeared to be virtually the same as that observed in men.

ment changes after the first visit, 31.4% in terms of dosage and 68.5% in terms of combined drugs while only 9 subjects (0.4%) had their previous drugs withdrawn due to either unfavorable effects or low-for-age HbA1c levels. Twenty-nine point seven percentage people, however, were kept on the same regimens despite high HbA1c values and, more in detail, specialists significantly increased prescription rates for both Inc and other common OHAs but reduced SU prescriptions by only 4.3% (they still mostly preferred glibenclamide) and started insulin only in the 3.8% patients, despite people with HbA1C>8% were as many as 58%. All this clearly leaps out from Figure 1 and even more clearly from Figure 6, which was prepared just to give an immediate idea of how treatment is like before referral, after referral and how far it still has to go to approach ideal standards.

As shown in Table 5, 70.3% patients underwent treat-

Finally, in Table 6, we cross-tabulated drugs against

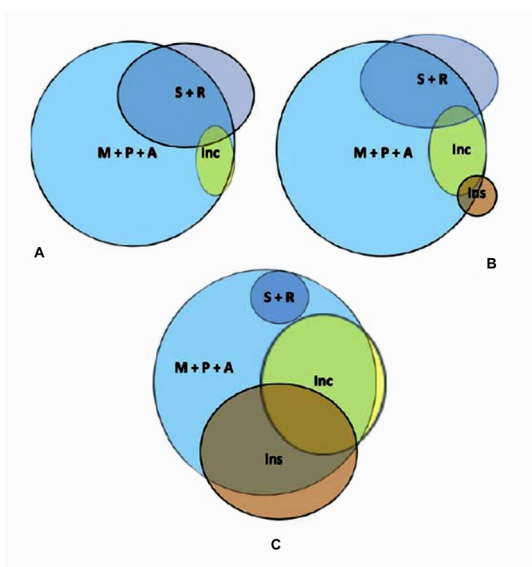


Figure 6: Graphic representation of prescriptive behavior as observed at referral (top left, panel A), immediately after referral as a result of specialists' prescriptions (top right, panel B) and as expected from 2015 ADA guidelines (bottom, panel C)²¹ (see also Tables 5 and 6). M= Metformin; P= Pioglitazone; A= Acarbose; S= Sulphonilureas; R= Repaglinide; Inc= Incretins (DPP4-is + GLP1-RA); Ins= Insulin.

Drug	at referral%	DCU-prescribed%	Variation Δ%	p
No therapy	2.2	1.7	11.3	0.382
Metformin	86.2	88.2	2.3	0.0358
Glibenclamide	20.9	17.0	18.7	<0.05
Glipizide	0.4	0.4	-	-
Gliclazide	8.7	8.5	2.3	0.0296
Glimepiride	14.6	16.7	14.4	<0.05
OtherSUs	0.1	0.1	-	-
Repaglinide	11.0	13.4	21.8	<0.0001
Pioglitazone	12.1	23.2	91.7	<0.0001
Acarbose	3.2	4.5	40.6	<0.001
Exenatide	1.3	2.9	123.1	<0.0001
Liraglutide	2.1	4.1	177.6	<0.0001
Sitagliptin	5.9	16.2	95.2	<0.0001
Vildagliptin	3.1	6.9	122.6	<0.0001
Saxagliptin	1.0	3.6	260.0	<0.0001
Insulin	-	3.8	-	-
DRUGS AGGREGATED IN MACRO-CLASSES				
Drugclass	at referral%	DCU-prescribed%	Variation Δ%	p
Metformin	86.2	88.2	2.3	0.0382
Sulphonylureas	44.4	42.5	- 4.3	<0.0001
Glitazones	12.1	23.2	91.7	<0.0001
Acarbose	3.2	4.5	40.6	0.0229
Repaglinide	11.0	13.4	21.8	<0.0001
Incretins	13.4	33.5	150.0	<0.0001
Insulin	-	3.8	-	-

Table 5: Comparison between drugs taken before referral and those prescribed by the diabetologist after that. Subjects on mono-therapy and polytherapy are pooled together.

Drug macroclass	Drug class	DR	DKD	DN	Other	HT
Insulinsensitizers + Acarbose	Metformin	42.0	39.5	40.6	40.7	41.9
	Glitazones	5.0	13.0	18.0	11.0	22.0
	Acarbose	2.0	1.5	3.0	2.2	4.4
Secretagogues	Sulfonylureas	28.0	23.0	33.3	27.0	41.5
	Repaglinide	10.0	6.0	10.5	7.4	11.9
Incretins	GLP1-RA	5.0	7.0	6.4	4.3	5.6
	Gliptins	30.1	28.0	33.6	28.7	27.6
Insulin	Insulin	3.6	3.3	3.4	3.2	1.2

HT=hypertension; DR=diabetic retinopathy; DKD=diabetic nephropathy; DN=diabetic neuropathy; "Other"= "Other Complications" including 68 subjects with previously excised non metastatic malignancies; 64 subjects with cataract, 23 with <50% occluding carotid atherosclerotic plaques, PAD diagnosed as haemodynamically irrelevant either *per se* (14 subjects) or after successful peripheral bypass (7 subject).

Table 6: Treatment choices (%) after referral with respect to complication (compare with Table 5). The sum of percent complications may exceed 100% because they may overlap in some subjects.

complications. This way we tried to be as informative as possible on the possible impact of comorbidities on specialists choices and therefore provide the reader with a more complete picture of Italian therapeutic attitude. It clearly shows that in the presence of chronic complications insulin tended to be added almost 3 times as frequently as in case of arterial hypertension, a highly prevalent comorbidity, while other drugs did not display any specific trend.

DISCUSSION AND CONCLUSIONS

Large trials have shown that optimized multifactorial interventions during the first year after diagnosis can prevent complications and reduce related costs for a long time.³⁰ We hypothesized that in people with type 2 diabetes, this might be obtained by an early integration between GPs and diabetes care teams.

The most striking finding in our study was the markedly higher HbA1c levels observed in late (>1 year disease duration) than early referral patients (≤ 1 year disease duration) together with a greater clinical complexity and a more severe disease in terms of higher complication rates and higher number of hypoglycemic agents needed.

Up to 85% patients referring to the DCUs were on drugs other than Incs prescribed by both GPs and diabetologists, being Incs used only by the remainder 15%. In greater detail, the most prescribed drugs - as apart from metformin - were SUs and especially glibenclamide. One might speculate how it happened that 15% patients were on Incs already before referring to the DCU. They in fact had been prescribed Incs during a sporadic, autonomously attempted contact with a diabetologist some time before, but after that they had kept referring to their GPs and in the meanwhile had got Incs out of their own pockets hoping to improve glucose control.

During the enrollment visit, about 70% cases had their previous drugs dosage increased or added other medications. Drugs mainly prescribed by diabetologists were pioglitazone and Incs (with greater preference for DPP4-is). Insulin was used only in 3.8% of patients, despite 58% displaying HbA1c levels >8% (64 mmol/mol) and having the greatest burden of complications along with the longest disease duration.

Interestingly enough, specialists reduced SU prescriptions by 4.3% only, despite dealing with the highest prevalence of patients with longer disease duration, poorer HbA1c values, older age and higher complication rates (33% with HbA1c 8.6 ± 0.6 referring after >2<5 years and 34.5% with HbA1c 8.8 ± 0.4 referring after >5 years from diagnosis). It has to be pointed out that SUs represent the oldest oral diabetes medication class and the most used world-wide as well, especially because of its low cost. They trigger insulin release by closing beta-cell ATP-sensitive potassium channels and are therefore highly effective in controlling glucose levels especially during the first 5 to 10 years from diagnosis.^{31,32} In fact, the associated secondary failure rate was reported to exceed that observed with other drugs, and was interpreted as due to an exacerbation of islet dysfunction. In addition to that, their use is typically associated with a modest, yet real, weight gain and puts people at risk for hypoglycemia.²⁷ All this represents a threaten for cardiovascular health and explains why a recent paper strongly suggests to avoid glibenclamide whenever possible from now on,³³ despite its low cost making it a very easily accepted solution for both doctors and patients especially in developing countries, which are still characterized by a low income and have to try as much as possible to strike an appropriate balance between health benefits and financial constraints.

Furthermore, basal insulin is typically suggested to be added since the beginning when patients are markedly hyperglycemic and/or symptomatic, and even-according to some guidelines-when HbA1c has been >7% (53 mmol/mol) for at least 3

months in non-frail patients,⁹ but it was hardly ever prescribed by specialists themselves. Thus, patients are mostly prevented from achieving expected goals also by persistently unbroken barriers like therapeutic inertia.³³ A typical example of the latter is given by what we could see: despite their inability to autonomously prescribe anything else than insulin sensitizers or SUs, Italian GPs often feel uneasy at the prospect of starting insulin therapy on their own and need diabetologists to have their patients treated by innovative drugs, but still seek help too late.¹⁴

Indeed several Italian and International studies suggest that T2DM patients under treatment at DCUs achieve better glucose levels.^{11,13,14,23} This is easily explained by the fact that diabetologists may focus more closely upon diabetes-related issues and have direct access to patient education resources and other specialists to collaborate with. Moreover, as apart from their renowned skills, Italian diabetologists hold power, being the only allowed prescribing innovative diabetes-related drugs. This enables them to start an aggressive, individualized treatment in case of poor metabolic control and get optimized results within few months.^{5,9,13} Nevertheless, the results of our study seem to be in disagreement with these claims, as Italian diabetologists behavior is not brilliant: they still use less insulin than expected from glucose levels and often go on with GP-prescribed OHAs at length without switching to innovative drugs.^{13,28} This seems in fact to constitute a case of therapeutic inertia.

The drawings in Figure 6 try to provide a true and fair view of specialists' attitude towards diabetes treatment in Italy by utilizing our electronic case report form (eCRF) therapy-related referral data (top left, panel A) and those recorded after the first visit at the participating DCUs (top right, panel B), as well as, an "ideal" picture of expected drug utilization based on ADA 2015 guidelines (bottom, panel C).²¹ The latter sketch in fact reflects a theoretical model taking into account age, weight, overall socio-economic conditions, chronic diabetes complications and the risk of acute disease complications (hypoglycemia above all). Being theoretical, though, it cannot include "humanistic" indicators like doctor-patient relationship, clinical attitude, therapeutic inertia, comorbidity-dependent polytherapy, fear of hypoglycemia, phobia about needles, education, false beliefs, and so on.³⁴ However, as a matter of fact, it clearly stands out from the picture that SUs were expected to be prescribed by specialists at least 50% less while insulin and Incs to be added to/substituted for other medications 10 and 3 times as much as observed, respectively.

However, in the presence of chronic complications Italian diabetologists proved to use less SUs and to be keener at using insulin even though the non-severe character of the latter did not require them to do so at any rate. This is in line with current guidelines anyway and proves Italian specialists are not shallow at all, but seem to be more impressed by undeniable, albeit early and light comorbidities than by those eventually expected to be developed as a result of long standing poor metabolic control. In other terms, daily practice shows that somehow they display

a sort of over optimism when no complications appear on the stage and this attitude lets them forget what national and international guideline-related flowcharts suggest to do to prevent complications.^{21,28,35}

Other organization-related factors may also contribute to diabetes specialists inertia, including lack of time and ill-organized overall integrated management.^{13,35-37} Inertia has been mostly thought to depend on (i) low GP propensity to changes, (i) poor care management DCU organization and eventually (iii) temporary unavailability of a specific drug^{38,39} but our study showed that something eventually prevented even diabetologists from following best practice recommendations since the first visit.

Specific actions have to be devised and readily taken against clinical inertia to improve diabetes outcome. This is suggested by the fact that, based on our study, despite some differences between them, even specialists proved to be insufficiently fast and aggressive at intensifying glucose lowering treatment. Improved awareness of blood glucose targets, subcutaneous glucose sensors and accurate HbA1c predicting algorithms may be good for that. Better tools and greater resources allowing safer intensive glucose lowering strategies may also help specialists implement best practices.^{28,40,41}

ACKNOWLEDGEMENTS

This paper was supported by AMD Research Foundation Onlus. Special thanks are due to patients and health professionals who contributed to the study on a fully voluntary basis and to the AMD START-DIAB Study Group members.

FS and SG wrote the paper under AC's supervision and all members of the START-DIAB Study Group equally contributed to the revision of the manuscript and approved its final version.

CONFLICTS OF INTEREST

The authors declare that they have no conflicts of interest.

Statement of Human and Animal Rights

All procedures followed were in accordance with the ethical standards of the responsible committee on human experimentation (institutional and national) and with the Helsinki Declaration of 1975, as revised in 2008.

Statement of Informed Consent

Informed consent was obtained from all the patients for being included in the study.

REFERENCES

1. The Diabetes Control and Complications Trial/Epidemiology

of Diabetes Interventions and Complications (DCCT/EDIC) Study Research Group. Intensive diabetes treatment and cardiovascular disease in patients with type 1 diabetes. *N Engl J Med.* 2005; 353: 2643-2653. doi: [10.1056/NEJMoa052187](https://doi.org/10.1056/NEJMoa052187)

2. Holman RR, Sanjoy KP, Bethel MA, Matthews DR, Neil HAW. 10-Year follow-up of intensive glucose control in type 2 diabetes. *N Engl J Med.* 2008; 359: 1577-1589. doi: [10.1056/NEJMoa0806470](https://doi.org/10.1056/NEJMoa0806470)

3. Gæde P, Lund-Andersen H, Parving HH, Pedersen O. Effect of a multifactorial intervention on mortality in type 2 diabetes. *N Engl J Med.* 2008; 358: 580-591. doi: [10.1056/NEJMoa0706245](https://doi.org/10.1056/NEJMoa0706245)

4. Ceriello A, Ihnat MA, Thorpe JE. Clinical review 2: The "metabolic memory": Is more than just tight glucose control Metab (United States). *J Clin Endocrinol Metab.* 2009; 94(2): 410-415. doi: [10.1210/jc.2008-1824](https://doi.org/10.1210/jc.2008-1824)

5. Bruno G, De Micheli A, Frontoni S, Monge L. Società Italiana di Diabetologia-Associazione Medici Diabetologi (SID-AMD) Working Group on the Standards of Care for Diabetes. Highlights from "Italian Standards of care for Diabetes Mellitus 2009-2010". *Nutr Metab Cardiovasc Dis.* 2011; 21(4): 302-314. doi: [10.1016/j.numecd.2010.08.009](https://doi.org/10.1016/j.numecd.2010.08.009)

6. Cimino A, Fava D, Giorda C, et al. AMD Annals: Quality indicators in diabetes care in Italy. 2010. Web site. http://www.infodiabetes.it/files/Annali_2010_inglese_II.pdf. Accessed August 11, 2016

7. Shah BR, Hux JE, Laupacis A, Zinman B, Van Walraven C. Clinical inertia in response to inadequate glycemic control: Do specialists differ from primary care physicians? *Diabetes Care.* 2005; 28: 600-606. doi: [10.2337/diacare.28.3.600](https://doi.org/10.2337/diacare.28.3.600)

8. Knecht LA, Gauthier SM, Castro JC, et al. Diabetes care in the hospital: Is there clinical inertia? *J Hosp Med.* 2006; 1: 151-160. doi: [10.1002/jhm.94](https://doi.org/10.1002/jhm.94)

9. Nathan DM, Buse JB, Davidson MB, et al. Medical management of hyperglycaemia in type 2 diabetes mellitus: A consensus algorithm for the initiation and adjustment of therapy: A consensus statement from the American Diabetes Association and the European Association for the Study of Diabetes. *Diabetologia.* 2009; 52: 17-30. doi: [10.1007/s00125-008-1157-y](https://doi.org/10.1007/s00125-008-1157-y)

10. Schernthaner G, Barnett AH, Betteridge DJ, et al. Is the ADA/EASD algorithm for the management of type 2 diabetes based on evidence or opinion? A critical analysis. *Diabetologia.* 2010; 53: 1258-1269. doi: [10.1007/s00125-010-1702-3](https://doi.org/10.1007/s00125-010-1702-3)

11. Suraci C, Mulas F, Rossi MC, Gentile S, Giorda C. Management of newly diagnosed patients with type 2 diabetes: What are the attitudes of physicians? A SUBITO!AMD survey on the

- early diabetes treatment in Italy. *Acta Diabetol.* 2012; 49(6): 429-433. doi: [10.1007/s00592-012-0374-5](https://doi.org/10.1007/s00592-012-0374-5)
12. Appropriatazza clinica, strutturale, tecnologica e operative per la prevenzione, diagnosi e terapia dell'obesita` e del diabete mellito [In Italian]. Quaderni del Ministero della salute n.10. 2011. Web site. <http://www.quadernidellasalute.it/archivio-quaderni/10-luglio-agosto-2011.php>. Accessed August 11, 2016
13. Giorda C, Picariello R, Nada E, et al. The impact of adherence to screening guidelines and of diabetes clinics referral on morbidity and mortality in diabetes. *PLoS One.* 2012; 7(4): e33839. doi: [10.1371/journal.pone.0033839](https://doi.org/10.1371/journal.pone.0033839)
14. Strollo F, Guarino G, Marino G, Paolisso G, Gentile S. Different prevalence of metabolic control and chronic complication rate according to the time of referral to a diabetes care unit in the elderly. *Acta Diabetol.* 2014; 51(3): 447-453. doi: [10.1007/s00592-013-0537-z](https://doi.org/10.1007/s00592-013-0537-z)
15. Nouwens E, van Lieshout J, Wensing M. Comorbidity complicates cardiovascular treatment: Is diabetes the exception? *Neth J Med.* 2012; 70: 298-305. Web site. <http://www.njmonline.nl/getpdf.php?id=1207>. Accessed August 11, 2016
16. de Pablos-Velasco P, Parhofer KG, Bradley C, et al. Current level of glycaemic control and its associated factors in patients with type 2 diabetes across Europe: Data from the PANORAMA study. *Clin Endocrinol (Oxf).* 2014; 80(1): 47-56. doi: [10.1111/cen.12119](https://doi.org/10.1111/cen.12119)
17. Stone MA, Charpentier G, Doggen K, et al. Quality of care of people with type 2 diabetes in eight European countries: Findings from the Guideline Adherence to Enhance Care (GUIDANCE) study. *Diabetes Care.* 2013; 36(9): 2628-2638. doi: [10.2337/dc12-1759](https://doi.org/10.2337/dc12-1759)
18. Allen JD, Curtiss FR, Fairman KA. Non-adherence, clinical inertia, or therapeutic inertia? *J Manag Care Pharm.* 2009; 15(8): 690-695. Web site. <http://www.amcp.org/data/jmcp/690-695.pdf>. Accessed August 11, 2016
19. Zolnieriek KB, dimatteo MR. Physician communication and patient adherence to treatment: A meta-analysis. *Med Care.* 2009; 47: 826-834. doi: [10.1097/MLR.0b013e31819a5acc](https://doi.org/10.1097/MLR.0b013e31819a5acc)
20. Okonofua EC, Simpson KN, Jesri A, Rehman SU, Durkalski VL, Egan BM. Therapeutic inertia is an impediment to achieving the Healthy People 2010 blood pressure control goals. *Hypertension.* 2006; 47(3): 345-351. doi: [10.1161/01.HYP.0000200702.76436.4b](https://doi.org/10.1161/01.HYP.0000200702.76436.4b)
21. Inzucchi SE, Bergenstal RM, Buse JB, et al. Management of hyperglycemia in type 2 diabetes, 2015: A patient-centered approach: Update to a position statement of the American Diabetes Association and the European Association for the Study of Diabetes. *Diabetes Care.* 2015; 38(1): 140-149. doi: [10.2337/dc14-2441](https://doi.org/10.2337/dc14-2441)
22. Rossi MC, Candido R, Ceriello A, et al. Trends over 8 years in quality of diabetes care: Results of the AMD Annals continuous quality improvement initiative. *Acta Diabetol.* 2015; 52(3): 557-571. doi: [10.1007/s00592-014-0688-6](https://doi.org/10.1007/s00592-014-0688-6)
23. Giorda CB, Mulas MF, Manicardi V, et al. Factors associated with a rapid normalization of HbA1c in newly diagnosed type 2 diabetes patients seen in a specialist setting. *Acta Diabetol.* 2013; 50(1): 81-87. doi: [10.1007/s00592-012-0431-0](https://doi.org/10.1007/s00592-012-0431-0)
24. AMD. I Progetti della Rete di Ricerca [In Italian]. Web site. http://www.aemmedi.it/pages/informazioni/i_progetti:_rete_di_ricerca/. Accessed August 11, 2016
25. Standards of medical care in diabetes-2016. *Diabetes Care.* 2016; 39 (Suppl 1): S13-S22. doi: [10.2337/dc16-S003](https://doi.org/10.2337/dc16-S003)
26. CDC. International Classification of Diseases. 9th Revision. Clinical Modification (ICD-9-CM). *National Center for Health Statistics.* Web site. <http://www.cdc.gov/nchs/icd/icd9cm.htm>. Accessed August 11, 2016
27. Feldman EL, Stevens MJ, Thomas PK, Brown MB, Canal N, Greene DA. A practical two-step quantitative clinical and electrophysiological assessment for the diagnosis and staging of diabetic neuropathy. *Diabetes Care.* 1994; 17: 1281-1289. doi: [10.2337/diacare.17.11.1281](https://doi.org/10.2337/diacare.17.11.1281)
28. Ceriello A, Gallo M, Candido R, et al. Personalized therapy algorithms for type 2 diabetes: A phenotype based approach. *Pharmgenomics Pers Med.* 2014; 7: 129-136. doi: [10.2147/PGPM.S50288](https://doi.org/10.2147/PGPM.S50288)
29. Rossi MC, Cristofaro MR, Gentile S, et al. Sex disparities in the quality of diabetes care: Biological and cultural factors may play a different role for different outcomes: A cross-sectional observational study from the AMD Annals initiative. *Diabetes Care.* 2013; 36(10): 3162-3168. doi: [10.2337/dc13-0184](https://doi.org/10.2337/dc13-0184)
30. Bruno G, Picariello R, Petrelli A, et al. Direct costs in diabetic and non-diabetic people: The population based Turin study, Italy. *Nutr Metab Cardiovasc Dis.* 2012; 22(8): 684-690. doi: [10.1016/j.numecd.2011.04.007](https://doi.org/10.1016/j.numecd.2011.04.007)
31. Kahn SE, Haffner SM, Heise MA, et al. Glycemic durability of rosiglitazone, metformin, or glyburide monotherapy. *N Engl J Med.* 2006; 355(23): 2427-2443. doi: [10.1056/NEJMoa066224](https://doi.org/10.1056/NEJMoa066224)
32. Giorda CB, Russo GT, Cercione S, de Cosmo S, Nicolucci A, Cucinotta D. Incidence and correlated factors of beta cell failure in a 4-year follow-up of patients with type 2 diabetes: A longitudinal analysis of the BETADECLINE study. *Acta Diabetol.* 2016. doi: [10.1007/s00592-016-0868-7](https://doi.org/10.1007/s00592-016-0868-7)

33. Eriksson JW, Bodegard J, Nathanson D, Thuresson M, Nystrom T, Norhammar A. Sulphonylurea compared to DPP-4 inhibitors in combination with metformin carries increased risk of severe hypoglycemia, cardiovascular events, and all-cause mortality. *Diabetes Res Clin Pract.* 2016; 117: 39-47. doi: [10.1016/j.diabres.2016.04.055](https://doi.org/10.1016/j.diabres.2016.04.055)
34. Pintaudi B, Lucisano G, Gentile S, et al. Correlates of diabetes-related distress in type 2 diabetes: Findings from the benchmarking network for clinical and humanistic outcomes in diabetes (BENCH-D) study. *J Psychosom Res.* 2015; 79(5): 348-354. doi: [10.1016/j.jpsychores.2015.08.010](https://doi.org/10.1016/j.jpsychores.2015.08.010)
35. Nicolucci A, Rossi MC, Arcangeli A, et al. Four-year impact of a continuous quality improvement effort implemented by a network of diabetes outpatient clinics: The AMD-Annals initiative. *Diabet Med.* 2010; 27(9): 1041-1048. doi: [10.1111/j.1464-5491.2010.03055.x](https://doi.org/10.1111/j.1464-5491.2010.03055.x)
36. de Berardis G, Pellegrini F, Franciosi M, et al. Quality of care and outcomes in type 2 diabetic patients: A comparison between general practice and diabetes clinics. *Diabetes Care.* 2004; 27(2): 398-406. doi: [10.2337/diacare.27.2.398](https://doi.org/10.2337/diacare.27.2.398)
37. Tabak AG, Tamàs G, Zgibor J, et al. Targets and reality: A comparison of health care indicators in the U.S. (Pittsburgh Epidemiology of Diabetes Complications Study) and Hungary (Diab Care Hungary). *Diabetes Care.* 2000; 23(9): 1284-1289. Web site: <https://hungary.pure.elsevier.com/en/publications/targets-and-reality-a-comparison-of-health-care-indicators-in-the>. Accessed August 11, 2016
38. El-Kebbi IM, Slocum W, Dunbar VG, Phillips LS. HbA1c improves more with follow-up in a diabetes clinic than in a primary care clinic (Abstract). *Diabetes.* 1998; 47: A2.
39. Brown JB, Nichols GA, Perry A. The burden of treatment failure in type 2 diabetes. *Diabetes Care.* 2004; 27(7): 1535-1540. doi: [10.2337/diacare.27.7.1535](https://doi.org/10.2337/diacare.27.7.1535)
40. Bolen S, Feldman L, Vassy J, et al. Systematic review: Comparative effectiveness and safety of oral medications for type 2 diabetes mellitus. *Ann Intern Med.* 2007; 147(6): 386-399. doi: [10.7326/0003-4819-147-6-200709180-00178](https://doi.org/10.7326/0003-4819-147-6-200709180-00178)
41. Gallo M, Mannucci E, de Cosmo S, et al. Algorithms for personalized therapy of type 2 diabetes: Results of a web-based international survey. *BMJ Open Diabetes Res Care.* 2015; 3(1): e000109. doi: [10.1136/bmjdr-2015-000109](https://doi.org/10.1136/bmjdr-2015-000109)